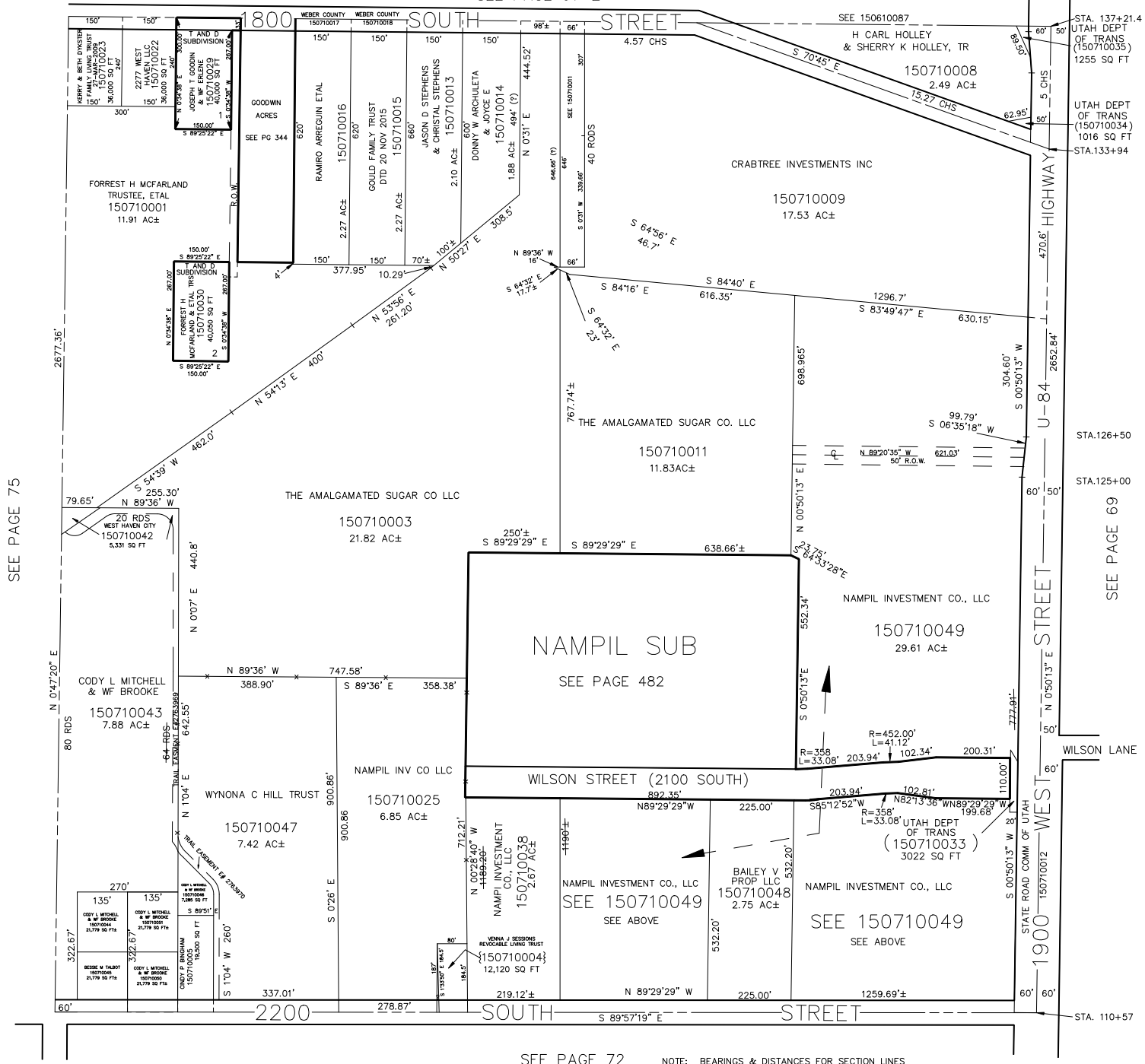


N.E. 1/4  
SECTION 26, T.6N., R.2W., S.L.B. & M.

IN WEST HAVEN CITY  
SCALE 1" = 200'

TAXING UNIT: 277

SEE PAGE 61-2



SEE PAGE 75

SEE PAGE 69

SEE PAGE 72

NOTE: BEARINGS & DISTANCES FOR SECTION LINES DETERMINED BY STATE PLANE COORDINATES RECEIVED FROM WEBER COUNTY SURVEYOR'S OFFICE.